

LASER Fume Extraction Solutions

AD 350 CU

Advantage

Filtered cooling air system to ensure optimal **laser performance** and reliability.

BOFA's Advantage 350 cooling filtration system has been designed to supply cool, filtered air to both the laser and power supply module. This clean, cool air ensures optimal laser performance and reliability. It can also be used as a seal to increase the IP rating of the laser.



STANDARD FEATURES:

- DeepPleat pre filter
- Filter efficiency F8 (95% @ 0.9 microns)
- Reverse Air Flow technology
- Low cost replacement filters
- Low noise levels
- Stainless steel unit
- Interfacing with laser including manual override switch
- Portable unit

OPTIONAL FEATURES:

- Remote stop / start interface
- Filter change signal

TYPICAL APPLICATIONS:

- Lasering
- Welding
- Coding
- Cutting
- Marking
- Drilling
- Engraving

TECHNOLOGY:



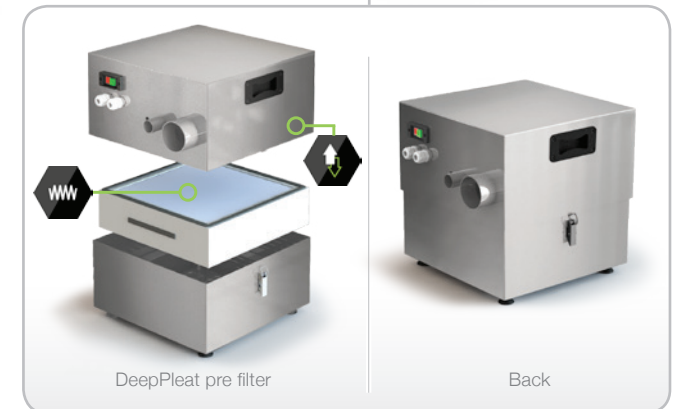
DeepPleat filter technology



Reverse Flow Air technology



SureCheck Quality Standard



SYSTEM PART NUMBERS			OPTIONS		
Model	Voltage	Part No.	24V Stop / Start	Filter change indicator	Hose Kit - 100mm
AD 350 CU Stainless Steel	230V	L5742A8202	A2001	A2002	A1020011
	115V	L5741A8202			

REPLACEMENT FILTER PART NUMBER	
Model	DeepPleat Pre Filter
AD 350 CU	A1030056

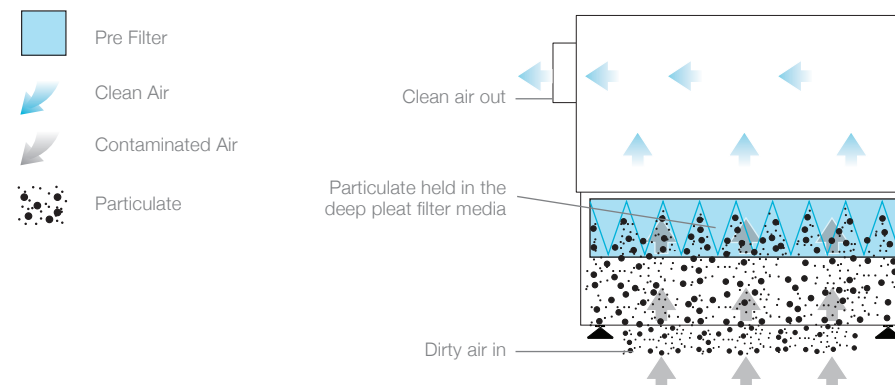
TECHNICAL DATA		
	230V	115V
Dimensions (HxWxD)	590 x 375 x 435 mm	23.2 x 14.8 x 17.1"
Cabinet Construction	Brushed stainless steel	
Airflow	350m³/hr	206cfm
Electrical Data	230v 1ph 50/60Hz Full load current: 2.0 amps	115v 1ph 50/60Hz Full load current: 3.5 amps
Noise Level	< 60dBA*	
Weight	25.3kg	55.8lbs
Approvals	CE	cUL

* At typical operating speed.

DEEPPLEAT PRE FILTER SPECIFICATIONS	
Surface Media Area	6m² approx
Filter Media	Glass Fibre
Filter Media Construction	100mm Maxi Fold construction with Webbing Spacers
Filter Efficiency	F8 (95% @ 0.9 microns)

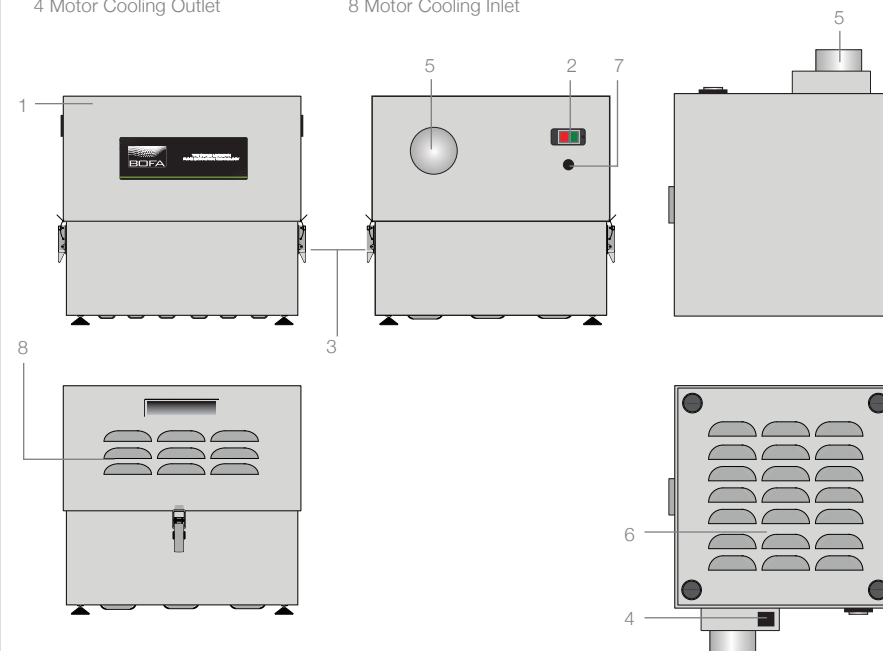
Other hose kits and filters are available. All of the above units are fitted with our standard filter combinations. For specific applications please call us for details. Replacement filters should always be ordered using the part number on the filters inside your extractor to ensure the correct filter is ordered. Datasheet correct at time of print.

AIRFLOW THROUGH FILTERS



TECHNICAL SPECIFICATION

- 1 Lid
- 2 On/Off Switch
- 3 Filter Compartment Latch
- 4 Motor Cooling Outlet
- 5 Hose Outlet Connection - 75mm
- 6 Air Inlet - Unfiltered
- 7 Power Cable Inlet
- 8 Motor Cooling Inlet



AD350CU:25/10/17V:3.4



Lusaro MarkColor S.L.

Pol. Ind. Lebario s/n, Edificio Anboto - 48220 Abadiño (Bizkaia)
Tfno : (00-34) 946 216 035 - Fax : (00-34) 946 816 596
Email : info@markcolor.com - Web : www.markcolor.com

Inscrito en el registro mercantil de Vizcaya, tomo 3.358 de las Secc. General de Sdades. Folio 83, Hoja nº BI-16.171, Inscripción 1ª N.I.F. : 48812952

Delegación Barcelona:

Pol. Ind. Can Roqueta, Carrer Ca n'Alzina, 118 A
08202 Sabadell (Barcelona)
Tlfno: 933 309 711 - Fax: 933 395 910

