

TIFLEX

TECHNOLOGICAL AND INDUSTRIAL SOLUTIONS

marquer le monde*

HRP R3

Direct printing

TIFLEX HRP 1000
Hauteur écriture: 100 mm

UVC: 10

DLUO: 31/12/13

Poids net: 10 Kg

Lot: 1234567890



(02)02024067897890 (10) 1234567890



Marking Identification Coding

* making an impression



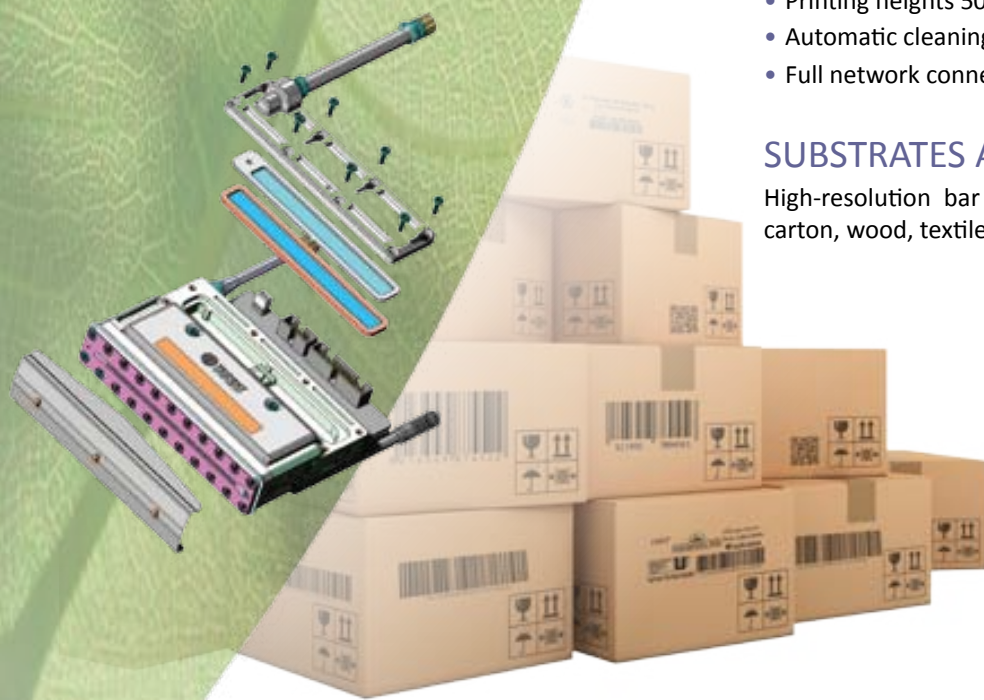
Sustainable print head*

- 90 billion firings
- 34-year life
- 5000 hours of continuous printing

Easy to remove and repair

- Extended life
- Replacement of faulty parts only
- Reduced maintenance

* on HRP 500 and 1000



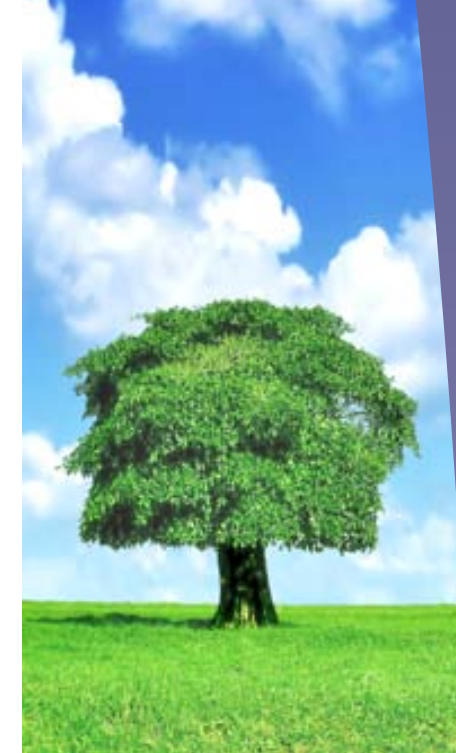
smaller carbon footprint, bigger savings ! HRP direct printing:

REDUCE THE CARBON FOOTPRINT OF YOUR TRACEABILITY

The HRP direct inkjet printing system enables you to reduce significantly your carbon footprint by printing your cartons without resorting to expensive labelling (30 to 80 % more costly). The carbon footprint represents half of the natural resources used by the human race; reducing it is of vital importance. TIFLEX, which obtained ISO 14001 Environmental certification in 2010, is committed to sustainable development.



Thanks to direct printing (without labels), an industrial-quality printhead and eco-friendly design (reduced weight, number of components, maintenance time and assembly time), the HRP R3 reduces the carbon footprint of traceability by 40 %.



sustainable, customised traceability systems

PERFORMANCE AND RELIABILITY

The HRP direct printing system provides marking and coding of your packaging units with high resolution and high speed, using a concentrated ink which is solvent-free and has no odour. Cleaning takes place automatically without impact on your productivity.

- Printing speed up to 200 meters/minute
- Message length up to 5 meters
- Printing heights 50, 70, 100, 140, 200 and up to 400 millimeters
- Automatic cleaning with ink recovery
- Full network connectivity (USB, RS232, Ethernet, TCP/IP, etc.)

SUBSTRATES AND TYPES OF PRINTING

High-resolution bar codes, text, logos and data matrix, on paper, carton, wood, textiles, etc.



TIFLEX: COMPREHENSIVE, INTEGRATED SYSTEMS FOR CODING AND TRACEABILITY

USERFRIENDLY AND EASY TO USE

HRP has a large 15" touch-screen which is easy and userfriendly. Create or modify your message with just a few key strokes! Navigating through menus is faster and more fluid!



- Reduces the time required to train operators
- Gives direct access to the required function
- Limits the risk of operator error
- Eliminates the mouse and keyboard, which are frequently causes of failure
- Provides instantaneous response times (3 times faster than a mouse)



RESEARCH & DEVELOPMENT

Each year, TIFLEX invests 3% of its turnover in research and development, so as to pursue the development of products which are ever-more innovative and eco-friendly.

Все люди рождаются свободными
إنتاج رقم التشغيله
龙鸡猴



PRINT IN ANY LANGUAGE

Unicode is a computer industry standard that allows text to be communicated in different languages: 100,000 characters and symbols are available.

HRP R3 is fully compatible with this standard.



OCKHAM: THE COMPREHENSIVE AND OPEN-ENDED SOFTWARE SYSTEM

Design of your system by means of Ockham software bricks opens the way to a wide variety of customised applications to match your constraints.

(e.g. adaptation for CodeSoft)

TIFLEX SERVICES: CUSTOMISABLE PRODUCTS AND SERVICES

Our sales and technical specialists support you and anticipate your requirements in order to contribute to your success and your future developments. Our relationship is reassuring, personalised and durable.

PRE-SALES SERVICES

- ↪ Marking samples: send us your substrates and examine the quality of marking we offer
- ↪ Pre-sales technical advice: we work with you to assess your technical needs and offer the most appropriate solution.
- ↪ Equipment leasing: we keep a stock of printers available for leasing.

SUPPORT SERVICES DURING THE SALES PROCESS

- ↪ Technical installation follow-up: we jointly prepare the installation of your marking systems for fast and efficient implementation on your site.
- ↪ Training: take advantage of our personalised training courses to obtain optimum use of your marking systems.

AFTER-SALES SERVICES

- ↪ Hotline technical support: one of our experienced technicians takes your call and helps you to apply the most effective solution.
- ↪ Maintenance contracts: keep control of your cost of use and extend the life of your marking systems.
- ↪ Consumables supply contracts: anticipate and improve your stock management – we have a large range of inks suitable for your requirements.
- ↪ Standard replacement service: we can provide you with standard replacements for your spare parts or printers in order to respond rapidly to your demands, under warranty.

The international presence of TIFLEX continues to expand.
We operate in 71 countries through a network of distributors,
providing local access to our expertise in terms of coding and traceability.



BP 3 - 01450 PONCIN - FRANCE
International sales department:
Tel. +33 (0) 4 74 37 33 80/97 - Fax +33 (0) 4 74 37 33 62
international@tiflex.fr

www.tiflex.com





ACCESSORIES FOR PERFECT TRACEABILITY

In conjunction with the HRP printer, these accessories guarantee the perfect traceability of your secondary packaging:

SHAFT ENCODER

Connected to your printer, the wheel constantly measures the speed of your conveyor and ensures perfect printing of barcodes.

ON-LINE BARCODE READER

Ensures that 100% of barcodes printed are correctly read-back

MICROMETER STAND

For adjustment of your system to millimeter accuracy

PANTOGRAPH

Optimises positioning of the print head on arrival of the substrate to be marked

OTHER AVAILABLE ACCESSORIES:

AUDIBLE AND VISIBLE ALARM

Warns you of an abnormal situation on the line

BARCODE READER

For manual read-back of barcodes or the selection and sending of messages for your printer

HRP R3 high resolution printer

✓ Easy to use, userfriendly

✓ Eco-friendly

✓ Reliable and economical



barcode reader



shaft encoder



micrometric bracket

Various standard versions of the HRP are available:

✓ For easy integration

- Standard version: will meet most of your requirements
- Ombilic version: arrange the print head in (almost) any position so that it meets all your integration constraints

✓ For greater flexibility

- HRP Mono: print a message 50 to 200 mm high with one or two print stations
- HRP Duo, 2 printers in 1: print two independent messages 50 to 200 mm high up to four print stations
- First version: designed for simple and standalone operation
- Upper version: includes all the connectivity required to operate with a link to your database or ERP system



ELLIPSIS

Ellipsis is an application which allows you to create your own messages on your PC and then transfer it to HRP printers.



TAYLOR MADE INDUSTRIAL SOLUTIONS

We are able to provide built-in printers for your production line, matching perfectly your needs.

We can also develop for you a customized network software solution. For example, we have created a special application to work with the world's leading CODESOFT identification software, called Rosetta for CODESOFT.



UBIK: this application lets you take control of Hitachi printers or Macsa laser coders, using your HRP printer.

CONTACT US:

International sales department
Tel : +33 (0)4 74 37 33 80/97
Fax : +33 (0)4 74 37 33 62
International@tiflex.fr
BP 3
01450 PONCIN France

Scan me !

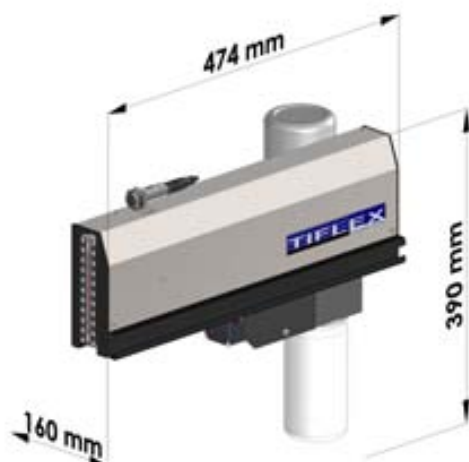


Or visit us at www.tiflex.com

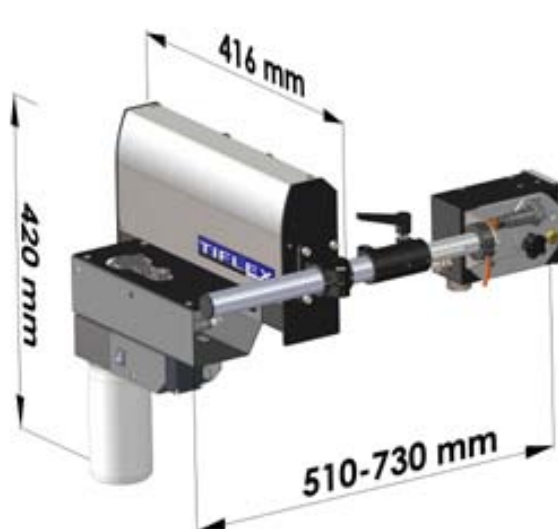
Technical characteristics

	HRP 700	HRP 500	HRP 1000
SYSTEM CONFIGURATION	Processor: 1 GHz – 256 MB SDRAM, PCI bus Internal or external tachometer Standard 3 m cable, optionally up to 30 m		
	Overlay system (8 x 1.25 m) for print lengths of up to 10 metres with 300 dpi horizontal resolution		
SYSTEM CONFIGURATION	1 to 4 70 mm print heads maximum per central unit	1 to 4 50 mm print heads maximum per central unit	1 to 4 100 mm print heads maximum per central unit
PRINT HEAD	Vertical resolution 180 dpi Horizontal resolution 50 to 200 dpi. Head-carton distance 1 mm. Detector cell (beam length adjustable up to 60 cm). Print speed up to 140 m/min.	Vertical resolution 192 dpi (bar codes). Horizontal resolution 50 to 300 dpi. Automatic purge system. Head-carton distance 1 to 3 mm. Detector cell (beam length adjustable up to 60 cm). Purged ink recovery. Print speed up to 200 m/min.	
USER INTERFACE	15" TFT COLOUR GRAPHICS TOUCH SCREEN. Dynamics software for print management and creation of configurations and messages, under Windows® XPE. Messages with fixed values, time stamps, counters, shift codes, line numbers, graphics (BMP and JPEG formats), bar codes (EAN13, GS1-128, DATAMATRIX, ITF14, CODE39, CODE128) and geometrical shapes. XML message format. Windows® TrueType fonts. Unicode printing. Import and Export functions for messages, configurations, graphics and fonts via USB ports and network links. 160 GB HARD DISK.		
CONSUMABLES	OIL-BASED SOLVENT-FREE INK High-contrast ink in 500 ml containers, printing plate cleaner. Cleaning sticks, print head cleaning cloths.		
NETWORK CONNECTION OUTPUTS	RS 232 serial link, Ethernet, TCP/IP. USB port for import/export of messages and graphics. 16 5-volt inputs/outputs. 12 V – 10 W alarm control. Control of execution of the print process by 12 V inputs.		
ENVIRONMENT	Mains power 115/230 V, 50-60 Hz. EMC and safety certification. Operating temperature 10 to 40 °C. Relative humidity (non-condensing) 10 to 90 %. IP 52 (other IP versions on request).		

standard version



ombilic version





QUALITY
MANAGEMENT

Tiflex provides its customers with secure, high quality and eco-friendly products.

We are:

- ISO 9001 Certified
- ISO 14001 Certified
- OHSAS 18001 Certified
- REACH Compliant
- ROHS Compliant



R & D COMMITMENT

Tiflex has a strong commitment to invest 3% of its turnover in new products development. The whole Tiflex product range is made by Tiflex in its plant in Poncin (France).

GLOBAL AND OPENED

TRACEABILITY SOFTWARE

Our Ockham software is based on an open system architecture to give you the freedom to choose the hardware and software solutions which best meet your business needs.



HRP Kit: High resolution inkjet printing



Our HRP R3 controller + Our high resolution reliable printhead + Your PC + Our software (Ellipsis)

= means best price for value printing of your traceability !

- ✓ **Best price for value:** thanks to HRP printers, you can get the best price for value high resolution printing solution on the market. Our former clients successes will help you to find future opportunities. Our company has a long history in marking and coding business and will help you by providing customer services together with our reliable printers.
- ✓ **Savings:** The Total Cost of Ownership of our printers is really low thanks to easier, faster and minimum maintenance (once a year). And thanks to our sustainable printhead (90 billions firings lifespan) and low ink and make up consumption.





ELLIPSIS

Ellipsis is an application which allows you to create your own messages on your PC and then transfer it to HRP printers.

TAYLOR MADE
INDUSTRIAL
SOLUTIONS



We are able to provide built-in printers for your production line, matching perfectly your needs.

We can also develop for you a customized network software solution. For example, we have created a special application to work with the world's leading CODESOFT identification software, called Rosetta for CODESOFT.



UBIK: this application lets you take control of Hitachi printers or Macsa laser coders, using your HRP printer.

CONTACT US:

International sales department

Tel : +33 (0)4 74 37 33 80/97

Fax : +33 (0)4 74 37 33 62

International@tiflex.fr

BP 3

01450 PONCIN France

Scan me !



Or visit us at www.tiflex.com

Technical characteristics

	HRP 700	HRP 500	HRP 1000
SYSTEM SETUP	1 GHz Processor– 256 Mo SDRAM PCI Bus. Internal or external encoder 3 m omnibic as standard, up to 30 m option, (distance controller/printstation)		
	Up to 10m length thanks to layers combination (8 x 1.25 m) for a horizontal resolution of 300 dpi.		
SYSTEM SETUP	1 to 4 printheads 70 mm per controller.	1 to 4 printheads 50 mm per controller.	1 to 4 printheads 100 mm per controller.
PRINthead	Vertical resolution 180 dpi. Horizontal resolution from 50 to 200 dpi. Distance printhead /carton : 1 mm. Detection photocell (beam length adjustable up to 60 cm). up to 140 m/mn.	Vertical resolution 192 dpi (ex. Barcodes) Horizontal resolution from 50 to 300 dpi. Automatic purge system . Distance printhead/carton: 1 to 2 mm. Detection photocell (beam length adjustable up to 60 cm). Recovery of purged ink . Up to 200 m/mn depending on printing resolution	
USER INTERFACE	«Dynamics» software for print management, creation of configuration and messages, Windows® XPE Messages with fixed values, time, counters, shift codes, line numbers, graphics, images barcodes (EAN13, GS1-128, DATAMATRIX, ITF14, CODE39, CODE128...) and geometric shapes Messages in XML format Windows,® Truetype and Unicode fonts Import and Export of messages, settings, graphics and fonts by USB ports and network High capacity hard disk (160 Go)		
CONSUMABLES	Ink without solvent, odourless High contrast ink, packaged in 500 ml, cleaner of printing plates SWAB and cleaning spray for the printhead		
OUTPUT NETWORK CONNECTIONS	Serial RS 232, Ethernet (TCP/IP). USB port 16 digital I/O in 5 V Alarm signal at 12 V - 10 W Control of the execution of the printing process by entries in 12 V		
ENVIRONMENT	Main supply 115/230 V, 50-60 Hz EMC certification and safety Operating temperature from 10 to 40 °C Relative humidity (non condensing) 10 to 90 % IP 52, IP 65 on request		



Tiflex is a partner of GS1.

GS1 is dedicated to the design and implementation of global standards and solutions to improve the efficiency and visibility of supply and demand chains globally and across sectors. The GS1 system of standards is the most widely used supply chain standards system in the world.

Printing applications:

Texts (Unicode), variable data, graphics, barcodes (ITF 14, GS1 128, Datamatrix,...) perfectly readable and compliants with worldwide regulations.

On paper, cardboard, wood, textile, bags,...



LUSARO MARCOLOR, S.L.
Pol. Lebario, Edificio Anboto
48220 Abadiño (Bizkaia)
Tlfno: 946 216 035 - Fax: 946 816 596
Email: info@markcolor.com
Web: www.markcolor.com

DELEGACION BARCELONA
Pol. Can Roqueta Carrer Ca n'Alzina 118A
08202 Sabadell (Barcelona)
Tlfno: 933 309 711 - Fax: 933 395 910

