

## DATASHEET



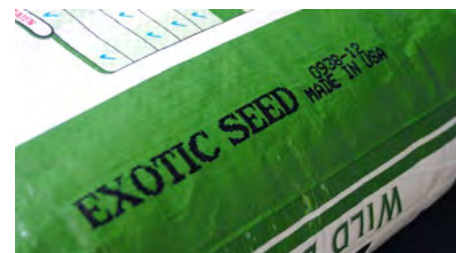
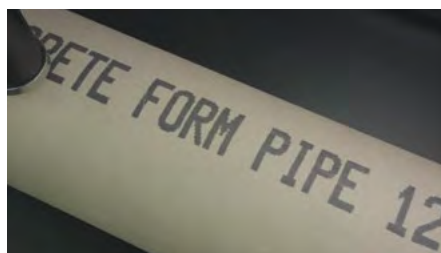
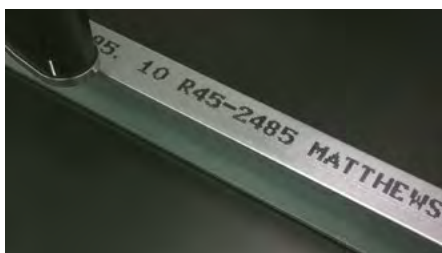
### All-in-One Valve Jet Controller

Optimized for usability, the robust IMark VX32 is an easy-to-use, yet powerful controller for Matthews Marking Systems' excellent valve jet printheads from the DOD 8000+ and the DOD Standard Series. With a 7" touchscreen and an intuitive user interface, creating messages and print layouts has never been easier. Multilingual with support for bidirectional text, Japanese and Chinese IME and a wide character set.



#### FEATURES

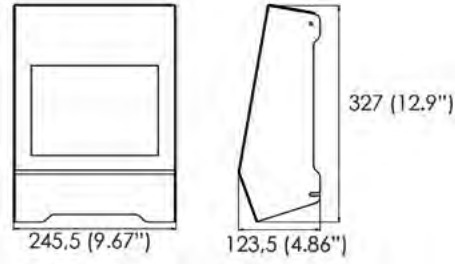
- + IP42
- + 7" touchscreen
- + 8000+ Series printheads deliver low ink consumption with high print quality at high speeds
- + Multi-lingual with support for bidirectional text, Japanese and Chinese IME



Technical Specifications

Printheads	Kg	Power	Temperature	Rh	IP
4x7 valve 2x16 valve 1x32 valve	3,9kg 8.6lbs	100-240VAC 50-60Hz 2,5 A	0-45°C 32-113°F	10-90% non condensing	IP42

Dimensions



Capabilities

- + Very easy, guided installation
- + True Multilingual, including support for BIDI, Japanese and Chinese IME
- + Password protected user levels
- + Troubleshooting and Maintenance screens
- + Virtually unlimited storage for messages and logos
- + External communication via Ethernet or RS232
- + Easy backup, restore and software update over USB
- + Optimized fonts with a wide character set for global applications
- + Online cost-per-mark and ink usage calculator
- + Static and dynamic text fields
- + User-editable variable fields customizable date, time and shift codes
- + Customizable sequential and batch counters
- + Barcodes and 2D codes

Recommended Printheads\*

	Printhead Type	Min. Char. Size	Max. Char. Size	Rec. Print Distance
<b>8000+ Maxi</b> Max Speed: 780 fpm, 238 m/min	7-Valve	1/4" (6 mm)	1 1/4" (32 mm)	1/2" (8 mm)
	16-Valve	1/4" (6 mm)	2 1/2" (64 mm)	1/2" (8 mm)
	32-Valve	1/4" (6 mm)	5" (128 mm)	1/2" (8 mm)
<b>8000+ Midi</b> Max Speed: 400 fpm, 122 m/min	7-Valve	3/16" (5 mm)	1 1/4" (32 mm)	1/2" (8 mm)
	16-Valve	3/16" (5 mm)	2 1/2" (64 mm)	1/2" (8 mm)
	32-Valve	3/16" (5 mm)	5" (128 mm)	1/2" (8 mm)
<b>8000+ Mini</b> Max Speed: 400 fpm, 122 m/min	7-Valve	3/32" (2 mm)	1 1/4" (32 mm)	1/2" (8 mm)
	16-Valve	3/32" (2 mm)	2 1/2" (64 mm)	1/2" (8 mm)
	32-Valve	3/32" (2 mm)	5" (128 mm)	1/2" (8 mm)

Recommended Ink Systems

- + High Pressure (HP), 2x1 Litres
- + High Pressure (HP) Advanced, 2x1 Litres with built-in low-level alarm

\*Also supports Matthews DOD Standard Series